



How to build your robot

www.pib.rocks/build

instructions for:

Pi connect

v2024



PRINT

BUILD

DEVELOP

YOUR OWN ROBOT

Build it better: our suggestion for assembling pib



We recommend **tools** for each step. These are a suggestion, you can of course also use other tools.



1-5

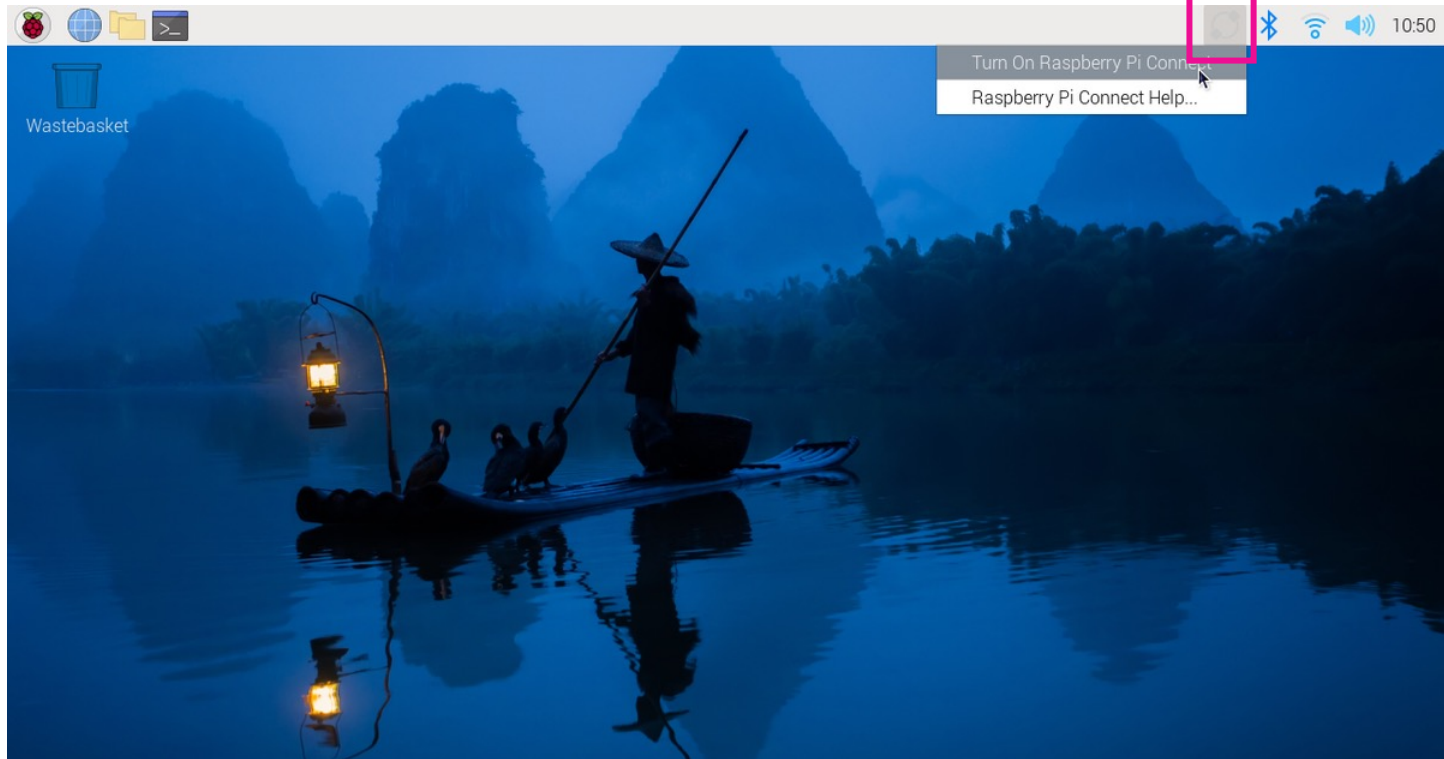
We have categorized each step according to its **difficulty** - from **1-5** (1 being the easiest, 5 the hardest)



We also show you which **non-printable parts** you need for each step

Step 1a

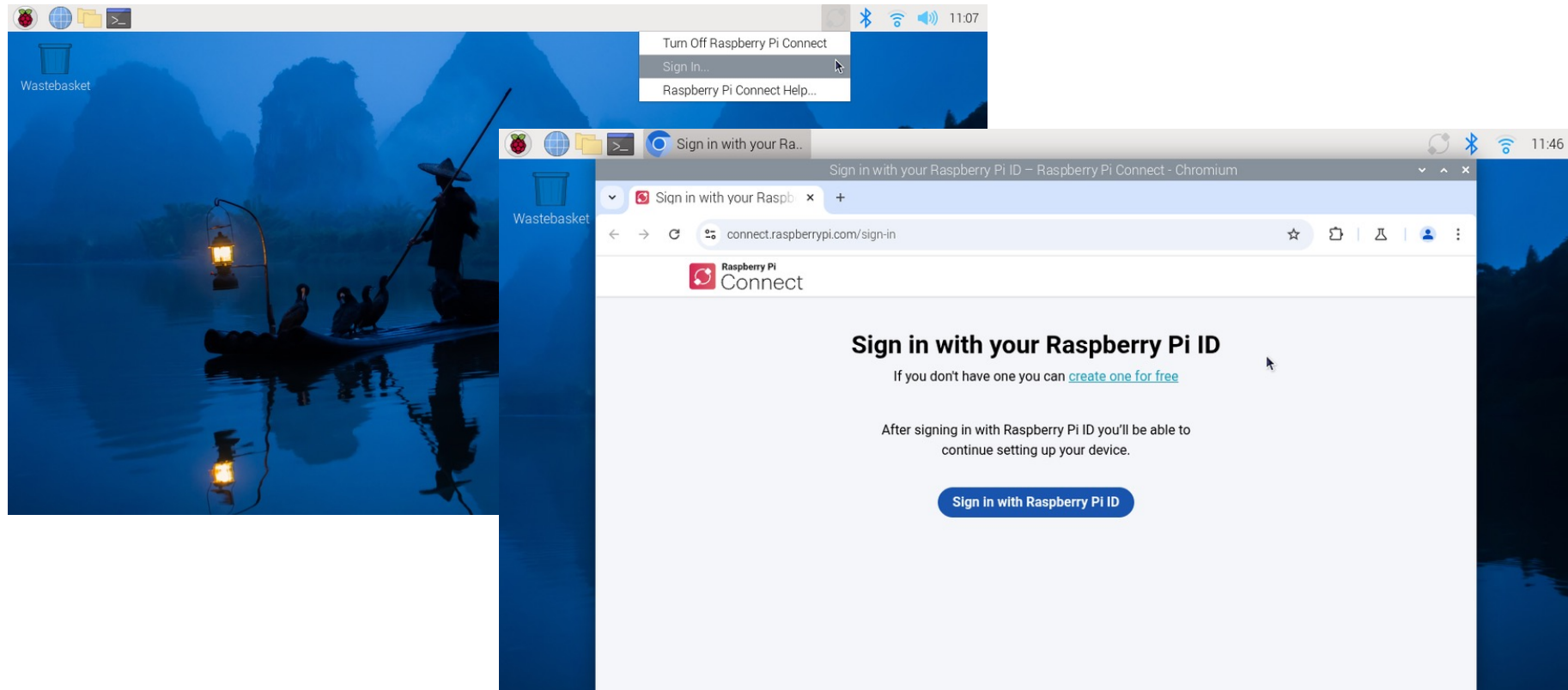
Click on the top right connect icon, then click on turn on Raspberry Pi connect



Step 1b





Click on sign in and then sign in with Raspberry Pi ID



Step 1c



Name your device a recognizable name and click on create token

 Raspberry Pi
Connect

Name your new device

Create device and sign in

Need help?

Find the answer to your question in our documentation, or seek help on our forums.

[Read documentation](#)[Browse forums](#)

Step 2

Click on connect via, then screen share



1

The screenshot shows the Raspberry Pi Connect web interface. At the top, there's a header with the Raspberry Pi logo and 'Connect' text. Below the header, there's a 'Personal' tab and a 'Devices' section. A table lists devices with columns for 'Device', 'Client version', and 'Last seen'. A device is listed with a redacted name, client version 2.5.2, and status 'Online'. Below the device name, there are buttons for 'Screen sharing' and 'Remote-shell'. A dropdown menu is open next to the device, showing options: 'Connect via', 'Screen sharing', and 'Remote-shell'. The 'Connect via' option is highlighted with a pink box. At the bottom, there's a dark footer with the text 'Need help?' and a link to documentation or forums.

Device	Client version	Last seen
[Redacted]	2.5.2	Online

Buttons: Screen sharing, Remote-shell

Dropdown menu options: Connect via, Screen sharing, Remote-shell

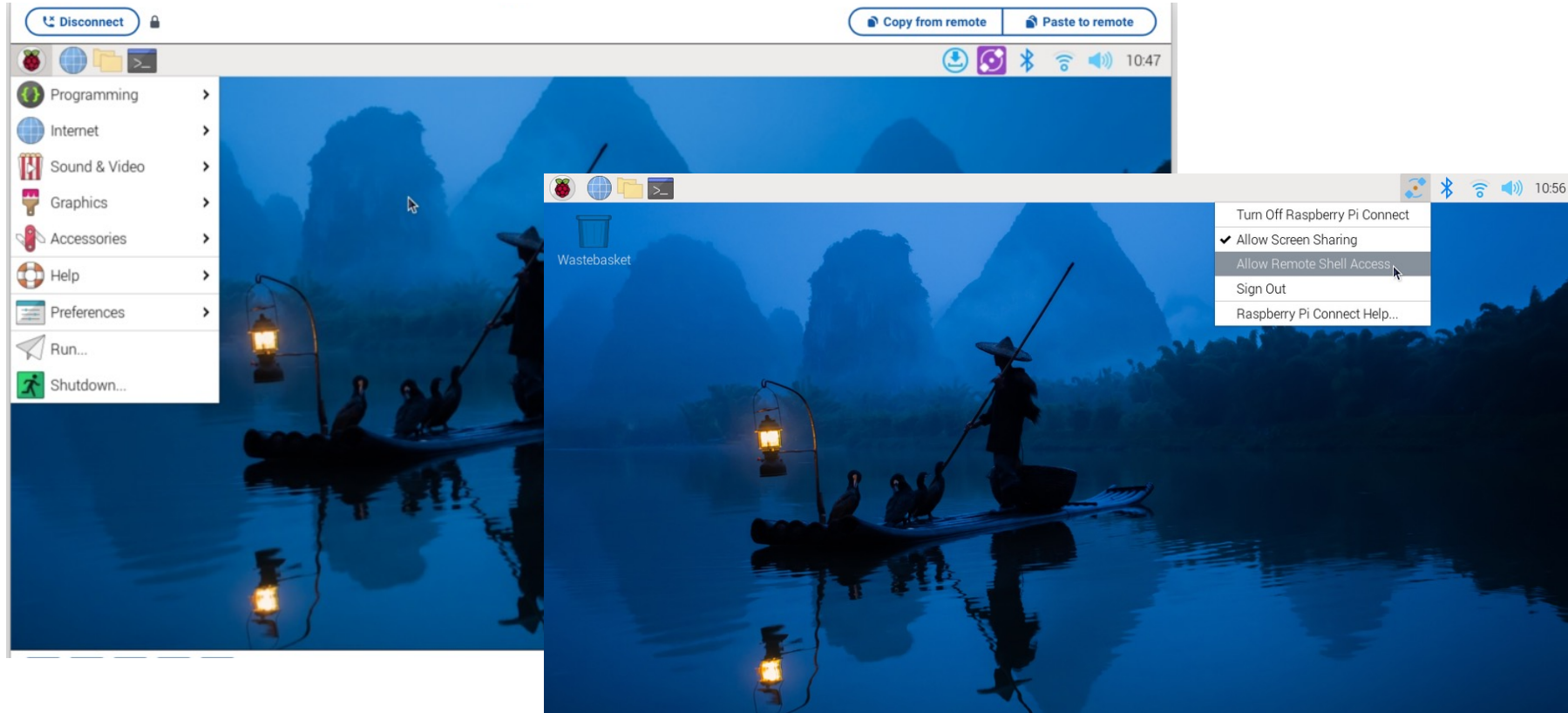
Need help?

Find the answer to your question in our documentation, or seek help on our forums.

Step 3

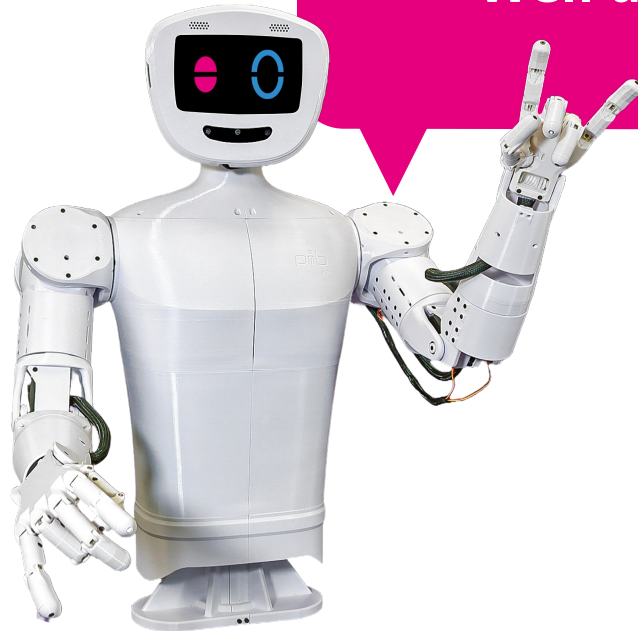


You should now see your RPi screen, do not forget to allow screen sharing



Congratulations

You did a great job, you have initiated pi connect !



Well done!

Do you need support?

Or do you need our pib.Box with all non-printable parts?

Or maybe you have some new ideas and improvements?

Please contact us.



team@pib.rocks

Send us an email.



discord.com/invite/GRdpyeDu7P

Join us on Discord.



shop.pib.rocks

Order non-printable parts for pib.